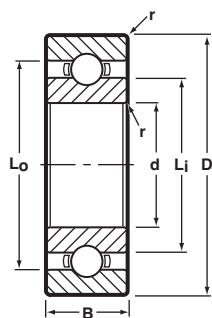


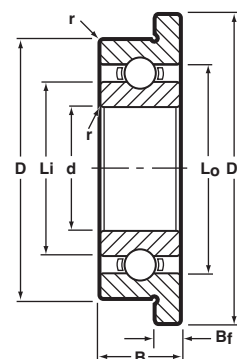
Radial, Open, Unflanged and Flanged



Unflanged
Ribbon Cage



Flanged
Ribbon Cage



BASIC P/N †	CAGE TYPE *	BORE d		O.D. D		WIDTH B		FLANGE DIA. D _f	FLANGE WIDTH B _f	LAND DIAMETER (REFERENCE)		FILLET RADIUS r		BALL COMPLEMENT		LOAD RATINGS** LB.	
		mm	(INCH) ◇	mm	(INCH) ◇	mm	(INCH) ◇			L _i mm	L _o mm	mm	(INCH) ◇	NO. Z	SIZE D _b	Dyn. C	STATIC C ₀
SSL-310		1.0	.0394	3.0	.1181	1.0	.0394	3.8	0.30	1.60	2.42	.05	.002	7	0.5 mm	9	2
SSL-310W51		1.0	.0394	3.0	.1181	1.5	.0591	3.8	0.40	1.50	2.50	.05	.002	5	1/40	9	2
☆ SSL-415	H	1.5	.0591	4.0	.1575	1.2	.0472	5.0	0.40	2.26	3.26	.05	.002	7	1/40	13	4
☆ SSLFW-415 ▲	H	1.5	.0591	4.0	.1575	1.2	.0472	4.8	0.33	2.26	3.26	.05	.002	7	1/40	13	4
☆ SSL-520	H/M5	2.0	.0787	5.0	.1969	1.5	.0591	6.1	0.50	2.90	4.02	.08	.003	7	0.8 mm	20	7
SSL-625		2.5	.0984	6.0	.2362	1.8	.0709	7.1	0.50	3.80	4.90	.08	.003	7	0.8 mm	20	7
☆ SSL-630	M5	3.0	.1181	6.0	.2362	2.0	.0787	7.2	0.60	3.79	4.90	.08	.003	8	0.8 mm	20	7
☆ SSL-730	M5	3.0	.1181	7.0	.2756	2.0	.0787	8.1	0.50	4.10	5.76	.10	.004	7	3/64	40	15
☆ SSL-740	KC/M5	4.0	.1575	7.0	.2756	2.0	.0787	8.2	0.60	4.80	5.90	.08	.003	7	1/32	20	7
SSL-840		4.0	.1575	8.0	.3150	2.0	.0787	9.2	0.60	5.20	6.93	.10	.004	7	3/64	40	15
☆ SSL-940	R/M5	4.0	.1575	9.0	.3543	2.5	.0984	10.3	0.60	5.08	7.62	.10	.004	7	1/16	66	26
SSL-1040		4.0	.1575	10.0	.3937	3.0	.1181	11.2	0.60	6.00	8.30	.15	.006	7	1/16	68	26
SSL-850		5.0	.1969	8.0	.3150	2.0	.0787	9.2	0.60	5.80	6.97	.08	.003	13	0.8 mm	29	13
SSL-950		5.0	.1969	9.0	.3543	2.5	.0984	10.2	0.60	6.00	7.70	.10	.004	7	3/64	40	15
SSL-1050		5.0	.1969	10.0	.3937	3.0	.1181	11.2	0.60	6.40	8.60	.15	.006	7	1/16	68	26
☆ SSL-1150	M5	5.0	.1969	11.0	.4331	3.0	.1181	12.5	0.80	6.40	8.60	.15	.006	7	1/16	75	31
☆ SSL-1060	H/M5	6.0	.2362	10.0	.3937	2.5	.0984	11.2	0.60	6.95	8.63	.10	.004	10	1.0 mm	49	18
SSL-1260		6.0	.2362	12.0	.4724	3.0	.1181	13.2	0.60	7.80	10.20	.15	.006	7	1/16	68	29
☆ SSL-1360	KC	6.0	.2362	13.0	.5118	3.5	.1378	15.0	1.00	8.00	11.00	.15	.006	8	2.0 mm	115	49
SSL-1170		7.0	.2756	11.0	.4331	2.5	.0984	12.2	0.60	8.10	9.80	.10	.004	9	3/64	46	20
SSL-1370	R/M5	7.0	.2756	13.0	.5118	3.0	.1181	14.2	0.60	8.38	10.93	.15	.006	10	1/16	82	37
☆ SSL-1470X	R/M5	7.0	.2756	14.0	.5512	3.5	.1378	16.0	1.00	9.19	11.37	.15	.006	11	1/16	126	55
SSL-1280	H	8.0	.3150	12.0	.4724	2.5	.0984	13.2	0.60	9.10	10.90	.10	.004	11	3/64	53	24
SSL-1480		8.0	.3150	14.0	.5512	3.5	.1378	15.6	0.80	9.90	12.10	.15	.006	10	1/16	86	42
☆ SSL-1680	KC/R	8.0	.3150	16.0	.6299	4.0	.1575	18.0	1.00	10.40	13.60	.20	.008	9	3/32	170	79
SSL-1790		9.0	.3543	17.0	.6693	4.0	.1575	19.0	1.00	11.20	14.81	.20	.008	10	3/32	183	88
SSL-2090		9.0	.3543	20.0	.7874	5.0	.1969	—	—	12.32	16.68	.30	.012	9	7/64	225	108
☆ SSL-1910	R	10.0	.3937	19.0	.7480	5.0	.1969	—	—	12.32	16.68	.30	.012	9	7/64	225	108
☆ SSL-1910X	KC	10.0	.3937	19.0	.7480	5.0	.1969	—	—	12.22	16.50	.30	.012	10	3/32	244	132

☆ Production standard.

Notes:

- Metric to inch conversion—see page 68.
- Basic part numbers shown above include code "SS" for AISI 440C stainless steel. If SAE 52100 chrome alloy steel is desired, delete "SS."
- See page 63 for ABEC tolerances.
- r=Maximum shaft or housing fillet radius that bearing corners will clear.

5. While we have the capability to produce the sizes listed, they are not all currently in production. Please consult with factory for minimum order quantity and quote.

† For flanged bearing, substitute prefix "SSLF-" when applicable.

* Please consult with factory for cage availability.

▲ Available only as flanged type.

◇ Inch conversions are given for reference only.

** Load ratings are based on ABMA Standard #12.