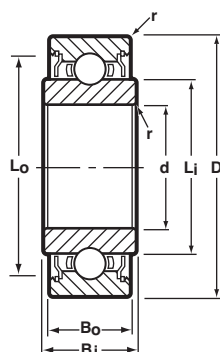


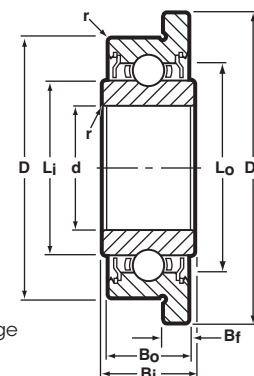
## Extended Inner Ring, Radial, Shielded, Unflanged and Flanged



Unflanged  
Shielded  
Ribbon Cage



Flanged  
Shielded  
Ribbon Cage



BASIC P/N †	CAGE TYPE *	BORE d		O.D. D		INNER WIDTH Bi		OUTER WIDTH Bo		FLANGE DIA. Df	FLANGE WIDTH Bf	LAND DIAMETER (REFERENCE)		FILLET RADIUS r	BALL COMPLEMENT		LOAD RATINGS** LB.	
		INCH	(mm) ◇	INCH	(mm) ◇	INCH	(mm) ◇	INCH	(mm) ◇			Li	Lo		NO. Z	SIZE Db	DYN. C	STATIC Co
SSRI-2 1/2ZZEE	H	.0469	1.191	.1562	3.967	.1250	3.175	.0937	2.380	.203	.031	.081	.134	.003	6	1/32	16	5
SSRI-3ZZEE	H	.0550	1.397	.1875	4.763	.1406	3.571	.1094	2.779	.234	.031	.093	.167	.003	5	3/64	28	10
SSRI-4ZZEE	H	.0781	1.984	.2500	6.350	.1719	4.366	.1406	3.571	.296	.031	.122	.205	.003	6	3/64	35	12
SSRI-3332ZZEE	H	.0937	2.380	.1875	4.763	.1250	3.175	.0937	2.380	.234	.031	.118	.167	.003	7	1/32	19	6
SSRI-3332ZZEE	R	.0937	2.380	.1875	4.763	.1250	3.175	.0937	2.380	.234	.031	.118	.167	.003	8	1/32	21	8
SSRI-5ZZEE	R/H	.0937	2.380	.3125	7.938	.1719	4.366	.1406	3.571	.359	.031	.173	.282	.003	6	1/16	60	22
SSRI-418ZZEE	H	.1250	3.175	.2500	6.350	.1406	3.571	.1094	2.779	.296	.031	.161	.228	.003	7	.0394	30	11
SSRI-418ZZEE	R	.1250	3.175	.2500	6.350	.1406	3.571	.1094	2.779	.296	.031	.161	.228	.003	8	.0394	33	12
SSRI-518ZZEE	R/H	.1250	3.175	.3125	7.938	.1719	4.366	.1406	3.571	.359	.031	.173	.282	.003	6	1/16	60	22
SSRI-618ZZEE	R/H	.1250	3.175	.3750	9.525	.1719	4.366	.1406	3.571	.422	.031	.173	.282	.005	6	1/16	60	22
SSR-2ZZEE	R/H	.1250	3.175	.3750	9.525	.1875	4.763	.1562	3.967	.440	.030	.200	.321	.012	7	1/16	66	26
SSRI-5532ZZEE	H	.1562	3.967	.3125	7.938	.1562	3.967	.1250	3.175	.359	.036	.221	.287	.003	7	3/64	41	15
SSRI-5532ZZEE	R	.1562	3.967	.3125	7.938	.1562	3.967	.1250	3.175	.359	.036	.221	.287	.003	8	3/64	45	17
SSRI-5632ZZEE	H	.1875	4.763	.3125	7.938	.1562	3.967	.1250	3.175	.359	.036	.221	.287	.003	7	3/64	41	15
SSRI-5632ZZEE	R	.1875	4.763	.3125	7.938	.1562	3.967	.1250	3.175	.359	.036	.221	.287	.003	8	3/64	45	17
SSRI-6632ZZEE	R/H	.1875	4.763	.3750	9.525	.1562	3.967	.1250	3.175	.422	.031	.235	.341	.003	8	1/16	76	31
SSR-3ZZEE	R/H	.1875	4.763	.5000	12.700	.2272	5.771	.1960	4.978	.565	.042	.276	.435	.012	7	3/32	140	59
SSRI-614ZZEE	H	.2500	6.350	.3750	9.525	.1562	3.967	.1250	3.175	.422	.036	.285	.348	.003	13	.0394	43	21
SSRI-814ZZEE	R/H	.2500	6.350	.5000	12.700	.2188	5.558	.1875	4.763	.547	.045	.330	.455	.005	10	1/16	88	40
SSR-4ZZEE	R/H	.2500	6.350	.6250	15.875	.2260	5.740	.1960	4.978	.690	.042	.364	.544	.012	8	3/32	159	70
SSRI-8516ZZEE	R	.3125	7.938	.5000	12.700	.1875	4.763	.1562	3.967	.547	.031	.362	.460	.005	11	1/16	93	43

### Notes:

- Inch to metric conversion—see page 68.
- Basic part numbers shown above include code "SS" for AISI 440C stainless steel. If SAE 52100 chrome alloy steel is desired, delete "SS."
- See page 63 for ABEC tolerances.
- r=Maximum shaft or housing fillet radius that bearing corners will clear.
- For single shield eliminate one "Z" from the basic part number.

† For flanged bearings substitute prefix "SSRIF-" or "SSRF-."

\* "R" Ribbon or "H" Crown cages are available as indicated. Please consult with factory for machined cage availability.

◇ Metric dimensions are for reference only.

\*\* Load ratings are based on ABMA Standard #12.