

ROD END BEARINGS

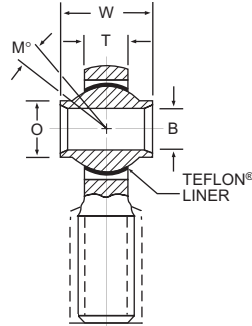
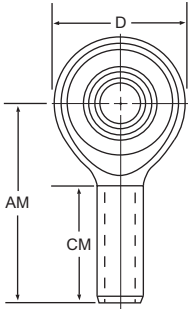
ARYT-ECR, ARYT-CR

3-piece, TEFLON® Lined, High Misalignment
Male and Female Threads

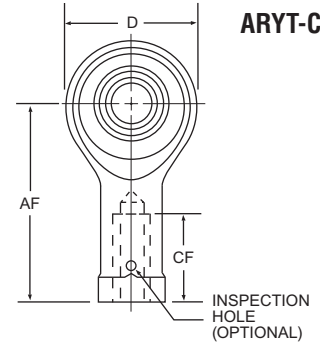
Note:

For left hand threads, add "L" to prefix.
Example: ARYT3LECR

ARYT-ECR



ARYT-CR



BASIC P/N	BORE X THD. SIZE REF.	# OF THDS.	(B)	(D)	(W)	(T)	(O)	(AM)	(AF)	(CM)	(CF)	(M°)	ULT. STATIC RADIAL LOAD LBS.	NO LOAD ROTATIONAL BREAKAWAY TORQUE IN./LBS.	APPROX. WEIGHT LBS.
			DIA. +.0000 -.0005	HEAD DIA. +/- .010	BALL WIDTH +.000 -.005	BODY WIDTH +/- .005	SHOULDER DIA. REF.	LGTH. C/L TO END +/- .031	LGTH. C/L TO END +/- .031	THREAD LGTH. +/- .031	THREAD LGTH. MIN.	MIS-ALIGN. REF.			
ARYT3ECR ARYT3CR	3/16 x 5/16	24	.1900	.750	.500	.220	.319	1.500	1.375	1.000	.700	13	4,830	.5-6	.073 .062
ARYT4ECR ARYT4CR	1/4 x 3/8	24	.2500	1.000	.593	.265	.390	1.938	1.625	1.250	.887	23	8,650	.5-6	.107 .107
ARYT5ECR ARYT5CR	5/16 x 7/16	20	.3125	1.125	.813	.355	.512	2.125	1.812	1.375	1.012	22	9,050	1-15	.161 .184
ARYT6ECR ARYT6CR	3/8 x 7/16	20	.3750	1.125	.813	.355	.512	2.125	1.812	1.375	1.012	22	9,050	1-15	.152 .171
ARYT7ECR ARYT7CR	7/16 x 1/2	20	.4375	1.312	.875	.355	.618	2.438	2.125	1.500	1.075	21	14,100	1-15	.249 .269
ARYT8ECR ARYT8CR	1/2 x 5/8	18	.5000	1.500	.937	.411	.730	2.625	2.625	1.625	1.450	19	19,800	1-15	.391 .400
ARYT10ECR ARYT10CR	5/8 x 3/4	16	.6250	1.750	1.200	.577	.856	2.875	2.875	1.750	1.700	19	26,500	1-15	.621 .633
ARYT12ECR ARYT12CR	3/4 x 7/8	14	.7500	2.000	1.280	.630	.970	3.375	3.375	1.875	1.825	18	34,200	1-24	.900 .869
ARYT14ECR ARYT14CR	7/8 x 7/8	14	.8750	2.200	1.400	.635	1.140	3.750	3.750	2.000	1.950	17	36,400	1-24	1.080 1.010
ARYT16ECR ARYT16CR	1 x 1-1/4	12	1.0000	2.750	1.875	.845	1.278	4.125	4.125	2.125	2.075	20	66,500	1-24	2.200 2.313
ARYT20ECR ARYT20CR	1-1/4 x 1-1/4	12	1.2500	3.125	1.875	1.015	1.523	5.000	5.000	2.875	3.075	20	80,000	1-24	3.100 3.154

Materials

DESIGNATION	BALL	LINER	RACE/BODY
ARYT-ECR ARYT-CR	440C CRES heat treated	TEFLON® fabric permanently bonded to race I.D.	17-4PH CRES heat treated

TEFLON® is a Du Pont registered trademark