

ROD END BEARINGS

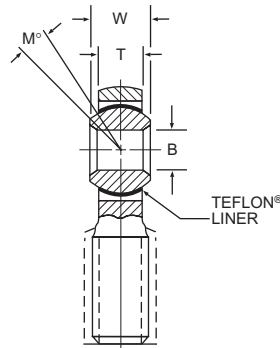
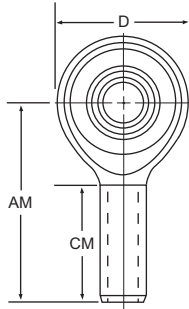
ART-ECR, ART-CR, AKNE

3-piece, TEFLON® Lined, Male and Female Threads

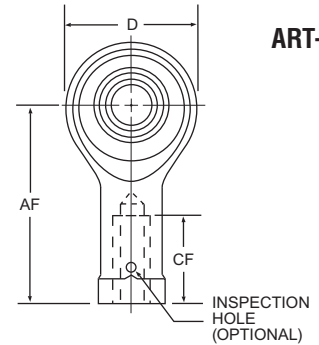
Note:

For left hand threads, add "L" to prefix.
Example: ARTL3ECR

ART-ECR



ART-CR



| BASIC P/N | BORE X THD. SIZE REF. | # OF THDS. | (B) | (D) | (W) | (T) | (AM) | (AF) | (CM) | (CF) | (M°) | ULT. STATIC RADIAL LOAD LBS. | NO LOAD ROTATIONAL BREAKAWAY TORQUE IN./LBS. | APPROX. WEIGHT LBS. |
|---------------------|---------------------------|------------|--------------------------|-----------------------|------------------------------|------------------------|------------------------------|------------------------------|--------------------------|----------------------|--------------------|---------------------------------|---|------------------------|
| | | | DIA. +.0000 -.0005 | HEAD DIA. +/- .010 | BALL WIDTH +.000 -.002 | BODY WIDTH +/- .005 | LGTH. C/L TO END +/- .010 | LGTH. C/L TO END +/- .010 | THREAD LGTH. +/- .031 | THREAD LGTH. MIN. | MIS-ALIGN. REF. | | | |
| ART3ECR ART3CR | 3/16 x 5/16 | 24 | .1900 | .806 | .437 | .337 | 1.562 | 1.375 | .968 | .750 | 15 | 2,360 | .5-6 | .072 .080 |
| ART4ECR ART4CR | 1/4 x 5/16 | 24 | .2500 | .806 | .437 | .337 | 1.562 | 1.469 | .968 | .750 | 15 | 4,860 | .5-6 | .072 .084 |
| AKNE4-4024 | 1/4 x 1/4 | 28 | .2500 | .806 | .437 | .337 | 1.562 | 1.469 | .968 | .750 | 15 | 7,200 | .5-6 | .070 |
| ART5ECR ART5CR | 5/16 x 5/16 5/16 x 3/8 | 24 24 | .3125 | .900 | .437 | .327 | 1.875 | 1.625 | 1.187 | .875 | 14 | 7,180 | 1-10 | .087 .102 |
| ART6ECR ART6CR | 3/8 x 3/8 | 24 | .3750 | 1.025 | .500 | .416 | 1.938 | 1.812 | 1.187 | 1.000 | 8 | 8,550 | 1-10 | .136 .161 |
| ART7ECR ART7CR | 7/16 x 7/16 | 20 | .4375 | 1.150 | .562 | .452 | 2.125 | 2.000 | 1.281 | 1.125 | 10 | 12,000 | 1-10 | .183 .212 |
| ART8ECR ART8CR | 1/2 x 1/2 | 20 | .5000 | 1.337 | .625 | .515 | 2.438 | 2.250 | 1.468 | 1.250 | 9 | 19,500 | 1-10 | .278 .325 |
| ART10ECR ART10CR | 5/8 x 5/8 | 18 | .6250 | 1.525 | .750 | .577 | 2.625 | 2.500 | 1.562 | 1.375 | 12 | 21,900 | 1-10 | .424 .481 |
| ART12ECR ART12CR | 3/4 x 3/4 | 16 | .7500 | 1.775 | .875 | .640 | 2.875 | 2.875 | 1.687 | 1.625 | 13 | 29,300 | 1-10 | .639 .673 |
| ART14ECR ART14CR | 7/8 x 7/8 | 14 | .8750 | 2.025 | .875 | .765 | 3.375 | 3.375 | 2.000 | 1.875 | 6 | 34,500 | 2-16 | .963 .959 |
| ART16ECR ART16CR | 1 x 1-1/4 | 12 | 1.0000 | 2.775 | 1.375 | 1.015 | 4.125 | 4.125 | 2.343 | 2.125 | 12 | 80,300 | 2-16 | 2.546 2.717 |

Materials

| DESIGNATION | BALL | LINER | RACE/BODY |
|-------------|--------------|--------------------|--------------|
| ART-ECR | 440C CRES | TEFLON® fabric | 17-4PH CRES |
| ART-CR | heat treated | permanently bonded | heat treated |
| AKNE | | to race I.D. | |

TEFLON® is a Du Pont registered trademark