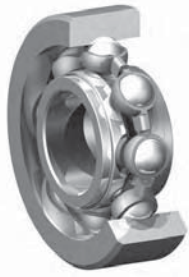
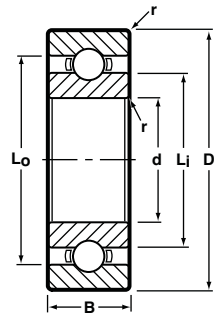




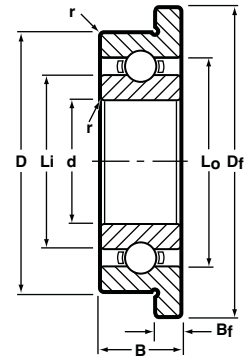
## Radial, Open, Unflanged and Flanged



Unflanged  
Ribbon Cage



Flanged  
Ribbon Cage



BASIC P/N †	CAGE OPTION	BORE d		O.D. D		WIDTH B		FLANGE DIA. D <sub>f</sub>	FLANGE WIDTH B <sub>f</sub>	LAND DIAMETER (REFERENCE)		FILLET RADIUS r		BALL COMPLEMENT		LOAD RATINGS**	
		mm	(INCH)◇	mm	(INCH)◇	mm	(INCH)◇			L <sub>i</sub>	L <sub>o</sub>	mm	(INCH)◇	NO. Z	SIZE D <sub>b</sub>	Dyn. C	STATIC C <sub>0</sub>
SSR-412		1.2	.0472	4.0	.1575	1.8	.0709	4.8	0.4	2.05	3.15	.10	.0040	6	0.8mm	18	4
SSR-515		1.5	.0591	5.0	.1969	2.0	.0787	6.5	0.6	2.60	3.70	.15	.0060	7	0.8mm	20	7
SSR-615		1.5	.0591	6.0	.2362	2.5	.0984	7.5	0.6	2.90	4.70	.15	.0060	6	3/64	35	13
SSR-620W52		2.0	.0787	6.0	.2362	2.5	.0984	7.2	0.6	3.10	4.90	.15	.0060	6	3/64	35	13
SSR-720Y52		2.0	.0787	7.0	.2756	2.5	.0984	8.2	0.6	3.80	5.50	.15	.0060	7	3/64	40	15
SSR-720		2.0	.0787	7.0	.2756	2.8	.1102	8.5	0.7	3.80	5.50	.15	.0060	7	3/64	40	15
SSR-725		2.5	.0984	7.0	.2756	2.5	.0984	8.5	0.7	3.80	5.50	.15	.0060	7	3/64	40	15
SSRFW-725 ▲		2.5	.0984	7.0	.2756	2.5	.0984	8.2	0.6	3.80	5.50	.15	.0060	7	3/64	40	15
SSR-825Y52		2.5	.0984	8.0	.3150	2.5	.0984	9.2	0.6	4.10	6.50	.15	.0060	6	1/16	60	22
SSR-825Y82		2.5	.0984	8.0	.3150	2.8	.1102	—	—	4.77	6.85	.15	.0060	8	3/64	44	18
SSR-825		2.5	.0984	8.0	.3150	2.8	.1102	9.5	0.7	4.10	6.50	.15	.0060	6	1/16	60	22
SSR-830Y52		3.0	.1181	8.0	.3150	2.5	.0984	9.2	0.6	4.10	6.50	.15	.0060	6	1/16	60	22
SSR-830		3.0	.1181	8.0	.3150	3.0	.1181	9.5	0.7	4.10	6.50	.15	.0060	6	1/16	60	22
SSR-930Y52		3.0	.1181	9.0	.3543	2.5	.0984	10.2	0.6	4.80	7.20	.15	.0060	7	1/16	66	26
SSR-930		3.0	.1181	9.0	.3543	3.0	.1181	10.5	0.7	4.80	7.20	.15	.0060	7	1/16	66	26
☆ SSR-1030	KC/M5/R	3.0	.1181	10.0	.3937	4.0	.1575	11.5	1.0	5.08	7.62	.15	.0060	7	1/16	66	26
SSR-1030Y53		3.0	.1181	10.0	.3937	3.5	.1378	—	—	5.08	7.62	.15	.0060	7	1/16	66	26
SSRFW-1030 ▲		3.0	.1181	10.0	.3937	4.0	.1575	11.6	0.8	5.08	7.62	.15	.0060	7	1/16	66	26
SSR-1140	R	4.0	.1575	11.0	.4331	4.0	.1575	12.5	1.0	6.40	8.60	.15	.0060	8	1/16	75	31
SSR-1140Y53	R	4.0	.1575	11.0	.4331	3.5	.1378	—	—	6.40	8.60	.15	.0060	8	1/16	75	31
SSRFW-1140 ▲		4.0	.1575	11.0	.4331	4.0	.1575	12.6	0.8	6.40	8.60	.15	.0060	8	1/16	75	31
SSR-1240		4.0	.1575	12.0	.4724	4.0	.1575	13.5	1.0	6.50	9.50	.20	.0080	7	2.0mm	104	42
SSR-1340		4.0	.1575	13.0	.5118	5.0	.1969	15.0	1.0	7.00	10.46	.20	.0080	7	3/32	139	60
☆ SSR-1640X	R	4.0	.1575	16.0	.6299	5.0	.1969	18.0	1.0	8.10	12.50	.30	.0120	8	3/32	157	68
☆ SSR-1350	R	5.0	.1969	13.0	.5118	4.0	.1575	15.0	1.0	7.00	10.46	.20	.0100	7	3/32	139	60
SSR-1450		5.0	.1969	14.0	.5512	5.0	.1969	16.0	1.0	7.60	11.50	.20	.0100	7	3/32	139	60
☆ SSR-1650X	R	5.0	.1969	16.0	.6299	5.0	.1969	18.0	1.0	8.10	12.50	.30	.0120	8	3/32	157	68
☆ SSR-1950	R	5.0	.1969	19.0	.7480	6.0	.2362	22.0	1.5	9.50	15.60	.30	.0120	6	5/32	481	240
SSR-1560		6.0	.2362	15.0	.5906	5.0	.1969	17.0	1.2	8.60	12.40	.15	.0060	7	7/64	212	101
SSRFW-1560 ▲		6.0	.2362	15.0	.5906	5.0	.1969	17.0	1.0	8.60	12.40	.15	.0060	7	7/64	212	101
SSR-1760		6.0	.2362	17.0	.6693	6.0	.2362	19.0	1.2	8.90	14.10	.20	.0100	6	3.5mm	384	187
☆ SSR-1960	KC/M5/R	6.0	.2362	19.0	.7480	6.0	.2362	22.0	1.5	9.50	15.60	.30	.0120	6	5/32	481	226
☆ SSR-1970	R	7.0	.2756	19.0	.7480	6.0	.2362	—	—	10.60	15.55	.30	.0120	7	1/8	379	174
☆ SSR-2270	KC/R	7.0	.2756	22.0	.8661	7.0	.2756	25.0	1.5	10.76	17.95	.30	.0120	7	5/32	569	273
☆ SSR-2280	KC/M5/R	8.0	.3150	22.0	.8661	7.0	.2756	25.0	1.5	10.76	17.95	.30	.0160	7	5/32	569	273
SSR-2690		9.0	.3543	26.0	1.0236	8.0	.3150	—	—	14.80	21.30	.30	.0120	7	3/16	703	399

☆ Production standard.

### Notes:

- Metric to inch conversion—see page 63.
- Basic part numbers shown above include code "SS" for AISI 440C stainless steel. If SAE 52100 chrome alloy steel is desired delete SS.
- See page 61 for ABEC tolerances.
- r=Maximum shaft or housing fillet radius that bearing corners will clear.
- Please consult with factory for cage availability.

6. While we have the capability to produce the sizes listed, they are not all currently in production. Please consult with factory for minimum order quantity and quote.

† For flanged bearing substitute prefix SSRF- when applicable.

▲ Available only as flanged type.

◇ Inch conversions are given for reference only.

\*\* Load ratings are based on ABMA Standard #12.