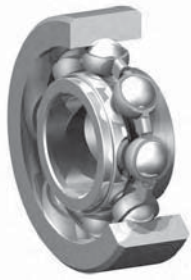
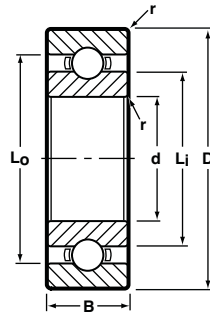




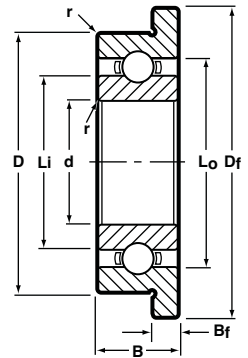
## Radial, Open, Unflanged and Flanged



Unflanged  
Ribbon Cage



Flanged  
Ribbon Cage



BASIC P/N †	CAGE OPTION	BORE d		O.D. D		WIDTH B		FLANGE DIA. D <sub>f</sub>	FLANGE WIDTH B <sub>f</sub>	LAND DIAMETER (REFERENCE)		FILLET RADIUS r		BALL COMPLEMENT		LOAD RATINGS**	
		mm	(INCH)◇	mm	(INCH)◇	mm	(INCH)◇			L <sub>i</sub>	L <sub>o</sub>	mm	(INCH)◇	NO. Z	SIZE D <sub>b</sub>	Dyn. C	STATIC C <sub>0</sub>
SSL-310		1.0	.0394	3.0	.1181	1.0	.0394	3.8	0.30	1.60	2.42	.05	.002	7	0.5mm	9	2
SSL-310W51		1.0	.0394	3.0	.1181	1.5	.0591	3.8	0.40	1.50	2.50	.05	.002	5	.635mm	9	2
☆ SSL-415	H	1.5	.0591	4.0	.1575	1.2	.0472	5.0	0.40	2.26	3.26	.05	.002	7	.635mm	13	4
☆ SSLFW-415 ▲	H	1.5	.0591	4.0	.1575	1.2	.0472	4.8	0.33	2.26	3.26	.05	.002	7	.635mm	13	4
☆ SSL-520	H/M5	2.0	.0787	5.0	.1969	1.5	.0591	6.1	0.50	2.90	4.00	.08	.003	7	0.8mm	20	7
SSL-520W02		2.0	.0787	5.0	.1969	2.0	.0787	6.2	0.60	2.90	4.00	.08	.003	7	0.8mm	20	7
SSL-625		2.5	.0984	6.0	.2362	1.8	.0709	7.1	0.50	3.80	4.90	.08	.003	7	0.8mm	20	7
☆ SSL-630	M5	3.0	.1181	6.0	.2362	2.0	.0787	7.2	0.60	3.80	4.90	.08	.003	7	0.8mm	20	7
☆ SSL-730X5W03	H/M5	3.0	.1181	7.0	.2756	3.0	.1181	8.1	0.50	4.10	5.86	.10	.004	7	1.0mm	30	11
SSLFW-730 ▲		3.0	.1181	7.0	.2756	2.0	.0787	8.2	0.60	4.10	5.80	.10	.004	7	3/64	40	15
☆ SSL-740	KC/M5	4.0	.1575	7.0	.2756	2.0	.0787	8.2	0.60	4.80	5.90	.08	.003	7	1/32	20	7
SSL-840		4.0	.1575	8.0	.3150	2.0	.0787	9.2	0.60	5.20	6.90	.10	.004	7	3/64	40	15
☆ SSL-940	M5/R	4.0	.1575	9.0	.3543	2.5	.0984	10.3	0.60	5.08	7.62	.10	.004	7	1/16	66	26
SSL-1040		4.0	.1575	10.0	.3937	3.0	.1181	11.2	0.60	6.00	8.30	.15	.006	7	1/16	68	26
SSL-850		5.0	.1969	8.0	.3150	2.0	.0787	9.2	0.60	5.80	6.97	.08	.003	13	0.8mm	29	13
SSL-850W82		5.0	.1969	8.0	.3150	2.8	.1102	—	—	5.80	6.97	.08	.003	13	0.8mm	29	13
SSL-950		5.0	.1969	9.0	.3543	2.5	.0984	10.2	0.60	6.00	7.70	.10	.004	7	3/64	40	15
SSL-1050		5.0	.1969	10.0	.3937	3.0	.1181	11.2	0.60	6.40	8.60	.15	.006	7	1/16	68	26
☆ SSL-1150	M5	5.0	.1969	11.0	.4331	3.0	.1181	12.5	0.80	6.40	8.60	.15	.006	8	1/16	75	31
☆ SSL-1060	H/M5	6.0	.2362	10.0	.3937	2.5	.0984	11.2	0.60	6.95	8.70	.10	.004	9	3/64	49	18
SSL-1260		6.0	.2362	12.0	.4724	3.0	.1181	13.2	0.60	7.80	10.20	.15	.006	7	1/16	68	29
☆ SSL-1360	KC	6.0	.2362	13.0	.5118	3.5	.1378	15.0	1.00	8.00	11.00	.15	.006	8	2.0mm	115	49
SSL-1170		7.0	.2756	11.0	.4331	2.5	.0984	12.2	0.60	8.10	9.80	.10	.004	9	3/64	46	20
SSL-1370		7.0	.2756	13.0	.5118	3.0	.1181	14.2	0.60	8.90	11.10	.15	.006	9	1/16	82	37
SSL-1470W04		7.0	.2756	14.0	.5512	4.0	.1575	—	—	9.00	12.00	.15	.006	9	2.0mm	126	55
SSLFW-1470 ▲		7.0	.2756	14.0	.5512	3.5	.1378	15.6	0.80	9.00	12.00	.15	.006	9	2.0mm	126	55
SSL-1280		8.0	.3150	12.0	.4724	2.5	.0984	13.2	0.60	9.10	10.90	.10	.004	11	3/64	53	24
SSL-1480		8.0	.3150	14.0	.5512	3.5	.1378	15.6	0.80	9.90	12.10	.15	.006	10	1/16	86	42
☆ SSL-1680	KC/R	8.0	.3150	16.0	.6299	4.0	.1575	18.0	1.00	10.40	13.60	.20	.008	9	3/32	170	79
SSLFW-1680 ▲		8.0	.3150	16.0	.6299	4.0	.1575	17.6	0.80	10.40	13.60	.20	.008	9	3/32	170	79
SSL-1790		9.0	.3543	17.0	.6693	4.0	.1575	19.0	1.00	11.20	14.81	.20	.008	10	3/32	183	88
SSL-2090		9.0	.3543	20.0	.7874	5.0	.1969	—	—	12.32	16.68	.30	.012	9	7/64	225	108
☆ SSL-1910	KC/R	10.0	.3937	19.0	.7480	5.0	.1969	—	—	12.32	16.68	.30	.012	9	7/64	225	108
SSL-1910Y54		10.0	.3937	19.0	.7480	4.5	.1772	—	—	12.32	16.68	.30	.012	9	7/64	225	108

☆ Production standard.

### Notes:

- Metric to inch conversion—see page 63.
- Basic part numbers shown above include code "SS" for AISI 440C stainless steel. If SAE 52100 chrome alloy steel is desired delete SS.
- See page 61 for ABEC tolerances.
- r=Maximum shaft or housing fillet radius that bearing corners will clear.
- Please consult with factory for cage availability.
- While we have the capability to produce the sizes listed, they are not all currently in production. Please consult with factory for minimum order quantity and quote.

† For flanged bearing substitute prefix SSLF- when applicable.

▲ Available only as flanged type.

◇ Inch conversions are given for reference only.

\*\* Load ratings are based on ABMA Standard #12.