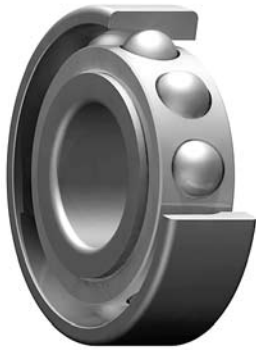


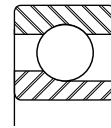
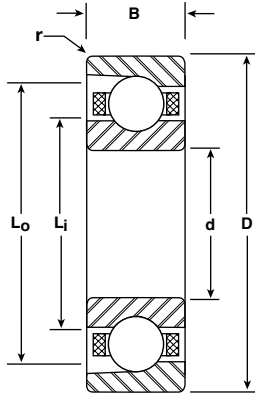


**Metric Series
Angular Contact**

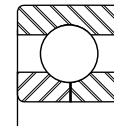
Bore Sizes 90-130 mm



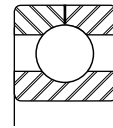
MER



MDR



GR split inner



GR split outer

BASIC P/N	BORE d		O.D. D		WIDTH B		LAND DIAMETER (REFERENCE)		FILLET RADIUS r	BALL COMPLEMENT		LOAD RATINGS LBS	
	mm	INCH	mm	INCH	mm	INCH	Li	Lo		NO.	SIZE	DYN. C	STATIC Co
							INCH	INCH	INCH		INCH		
MER-1818	90	3.5433	115	4.5276	13	.5118	3.904	4.166	.039	31	9/32	4950	5600
MER-1918	90	3.5433	125	4.9213	18	.7087	3.969	4.495	.039	26	7/16	10900	11600
MER-118	90	3.5433	140	5.5118	24	.9449	4.151	4.903	.059	20	5/8	18200	17400
MER-218	90	3.5433	160	6.2992	30	1.1811	4.394	5.447	.079	15	7/8	28100	24100
MER-318	90	3.5433	190	7.4803	43	1.6929	4.797	6.226	.098	13	1-3/16	44200	36200
MER-1819	95	3.7402	120	4.7244	13	.5118	4.101	4.363	.039	32	9/32	5000	5750
MER-1919	95	3.7402	130	5.1181	18	.7087	4.169	4.692	.039	28	7/16	11300	12600
MER-119	95	3.7402	145	5.7087	24	.9449	4.348	5.100	.059	21	5/8	18600	18400
MER-219	95	3.7402	170	6.6929	32	1.2598	4.652	5.780	.079	15	15/16	31900	27600
MER-319	95	3.7402	200	7.8740	45	1.7717	5.055	6.559	.098	13	1-1/4	48500	40100
MER-1820	100	3.9370	125	4.9213	13	.5118	4.259	4.598	.039	34	9/32	5150	6100
MER-1920	100	3.9370	140	5.5118	20	.7874	4.423	5.025	.039	26	1/2	13900	15100
MER-120	100	3.9370	150	5.9055	24	.9449	4.545	5.297	.059	21	5/8	18500	18600
MER-220	100	3.9370	180	7.0866	34	1.3386	4.910	6.113	.079	15	1	35800	31300
MER-1821	105	4.1339	130	5.1181	13	.5118	4.456	4.795	.039	36	9/32	5300	6400
MER-1921	105	4.1339	145	5.7087	20	.7874	4.620	5.222	.039	27	1/2	14200	15800
MER-121	105	4.1339	160	6.2992	26	1.0236	4.802	5.630	.079	21	11/16	22100	22300
MER-221	105	4.1339	190	7.4803	36	1.4173	5.167	6.446	.079	15	1-1/16	40000	35300
MER-1822	110	4.3307	140	5.5118	16	.6299	4.714	5.128	.039	32	11/32	7300	8650
MER-1922	110	4.3307	150	5.9055	20	.7874	4.817	5.418	.039	28	1/2	14300	16500
MER-122	110	4.3307	170	6.6929	28	1.1024	5.060	5.963	.079	20	3/4	25200	25100
MER-222	110	4.3307	200	7.8740	38	1.4961	5.425	6.779	.079	15	1-1/8	44300	39400
MER-1824	120	4.7244	150	5.9055	16	.6299	5.108	5.521	.039	35	11/32	7600	9400
MER-1924	120	4.7244	165	6.4961	22	.8661	5.271	5.948	.039	27	9/16	17400	20100
MER-124	120	4.7244	180	7.0866	28	1.1024	5.454	6.356	.079	22	3/4	26600	28000
MER-224	120	4.7244	215	8.4646	40	1.5748	5.917	7.271	.079	16	1-1/8	46200	43000
MER-1826	130	5.1181	165	6.4961	18	.7087	5.562	6.051	.039	32	13/32	9900	12100
MER-1926	130	5.1181	180	7.0866	24	.9449	5.726	6.478	.059	27	5/8	21200	24700
MER-126	130	5.1181	200	7.8740	33	1.2992	5.969	7.022	.079	20	7/8	33200	34300
MER-226	130	5.1181	230	9.0551	40	1.5748	6.372	7.801	.098	17	1-3/16	52900	51200

Notes:

- Metric series angular contact ball bearings are typically manufactured from 52100 chrome steel to ABEC 3, 5 and 7 tolerances per ABMA Standard 20.
- Standard contact angles are 15° and 25°. Other options are available.
- Part numbers listed are with nonseparable, outer ring relieved configuration. Other design options are available.
- Fillet Radius (r) is the maximum shaft or housing fillet radius that bearing corners will clear.