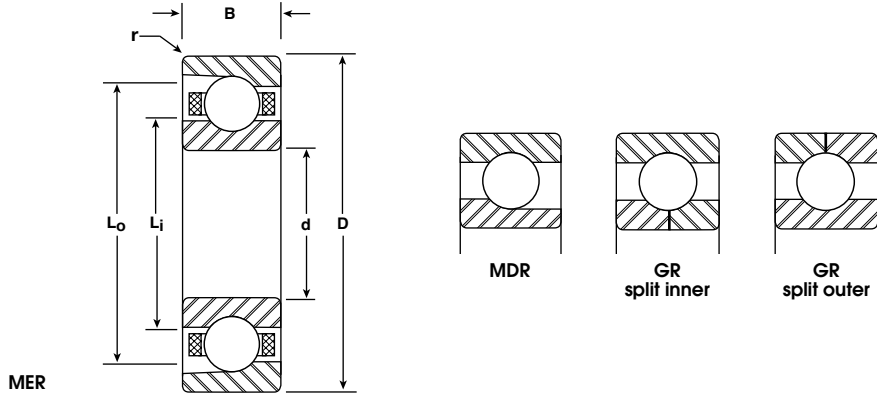
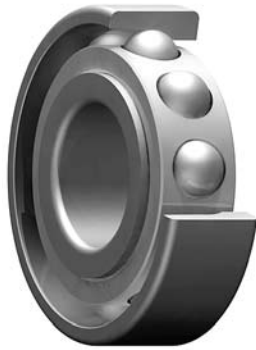


Metric Series

Angular Contact

Bore Sizes 60-85 mm



BASIC P/N	BORE d		O.D. D		WIDTH B		LAND DIAMETER (REFERENCE)		FILLET RADIUS r	BALL COMPLEMENT		LOAD RATINGS LBS	
	mm	INCH	mm	INCH	mm	INCH	Li	Lo		NO.	SIZE	DYN. C	STATIC Co
							INCH	INCH	INCH				
MER-1812	60	2.3622	78	3.0709	10	.3937	2.584	2.848	.012	28	7/32	3050	3050
MER-1912	60	2.3622	85	3.3465	13	.5118	2.666	3.042	.039	21	5/16	5150	4700
MER-112	60	2.3622	95	3.7402	18	.7087	2.788	3.314	.039	18	7/16	8950	7600
MER-212	60	2.3622	110	4.3307	22	.8661	2.971	3.722	.059	14	5/8	14700	11300
MER-312	60	2.3622	130	5.1181	31	1.2205	3.213	4.266	.079	11	7/8	22600	16100
MER-1813	65	2.5591	85	3.3465	10	.3937	2.821	3.084	.024	29	7/32	3050	3150
MER-1913	65	2.5591	90	3.5433	13	.5118	2.863	3.239	.039	23	5/16	5450	5200
MER-113	65	2.5591	100	3.9370	18	.7087	2.985	3.511	.039	19	7/16	9150	8100
MER-213	65	2.5591	120	4.7244	23	.9055	3.228	4.055	.059	14	11/16	17400	13600
MER-313	65	2.5591	140	5.5118	33	1.2992	3.471	4.599	.079	12	15/16	27200	20200
MER-1814	70	2.7559	90	3.5433	10	.3937	3.018	3.281	.024	31	7/32	3150	3350
MER-1914	70	2.7559	100	3.9370	16	.6299	3.139	3.553	.039	21	11/32	6100	5750
MER-114	70	2.7559	110	4.3307	20	.7874	3.243	3.844	.039	18	1/2	11300	9950
MER-214	70	2.7559	125	4.9213	24	.9449	3.424	4.252	.059	15	11/16	18200	14800
MER-314	70	2.7559	150	5.9055	35	1.3780	3.729	4.932	.079	12	1	30500	23000
MER-1815	75	2.9528	95	3.7402	10	.3937	3.214	3.478	.024	33	7/32	3200	3550
MER-1915	75	2.9528	105	4.1339	16	.6299	3.318	3.769	.039	26	3/8	8250	8500
MER-115	75	2.9528	115	4.5276	20	.7874	3.440	4.041	.039	20	1/2	12100	11200
MER-215	75	2.9528	130	5.1181	25	.9843	3.621	4.449	.059	16	11/16	19000	16000
MER-315	75	2.9528	160	6.2992	37	1.4567	3.986	5.265	.079	12	1-1/16	34100	26100
MER-1816	80	3.1496	100	3.9370	10	.3937	3.411	3.675	.024	35	7/32	3300	3750
MER-1916	80	3.1496	110	4.3307	16	.6299	3.515	3.966	.039	27	3/8	8350	8850
MER-116	80	3.1496	125	4.9213	22	.8661	3.809	4.261	.039	19	9/16	14500	13300
MER-216	80	3.1496	140	5.5118	26	1.0236	3.992	4.669	.079	16	3/4	22200	19000
MER-316	80	3.1496	170	6.6929	39	1.5354	4.470	5.372	.079	12	1-1/8	37800	29300
MER-1817	85	3.3465	110	4.3307	13	.5118	3.669	4.007	.039	30	9/32	4900	5450
MER-1917	85	3.3465	120	4.7244	18	.7087	3.772	4.298	.039	25	7/16	10700	11100
MER-117	85	3.3465	130	5.1181	22	.8661	3.893	4.570	.039	20	9/16	14900	14200
MER-217	85	3.3465	150	5.9055	28	1.1024	4.137	5.114	.079	15	13/16	24600	20800
MER-317	85	3.3465	180	7.0866	41	1.6142	4.539	5.893	.098	13	1-1/8	40100	32400

Notes:

1. Metric series angular contact ball bearings are typically manufactured from 52100 chrome steel to ABEC 3, 5 and 7 tolerances per ABMA Standard 20.
2. Standard contact angles are 15° and 25°. Other options are available.
3. Part numbers listed are with nonseparable, outer ring relieved configuration. Other design options are available.
4. Fillet Radius (r) is the maximum shaft or housing fillet radius that bearing corners will clear.