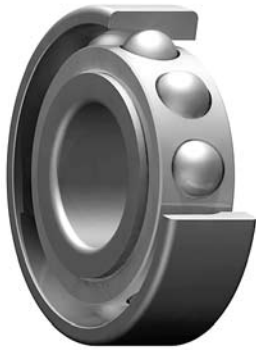


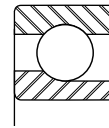
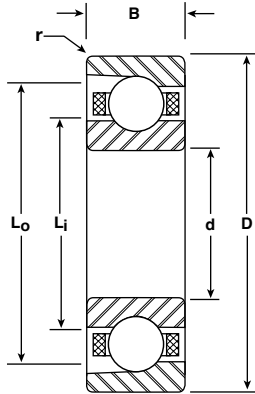


**Metric Series
Angular Contact**

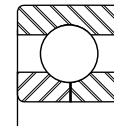
Bore Sizes 30-55 mm



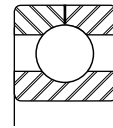
MER



MDR



GR
split inner



GR
split outer

BASIC P/N	BORE d		O.D. D		WIDTH B		LAND DIAMETER (REFERENCE)		FILLET RADIUS r	BALL COMPLEMENT		LOAD RATINGS LBS	
	mm	INCH	mm	INCH	mm	INCH	Li	Lo		NO.	SIZE	DYN. C	STATIC Co
							INCH	INCH	INCH		INCH		
MER-1806	30	1.1811	42	1.6535	7	.2756	1.342	1.492	.012	23	1/8	970	810
MER-1906	30	1.1811	47	1.8504	9	.3543	1.384	1.649	.012	16	7/32	2350	1650
MER-106	30	1.1811	55	2.1654	13	.5118	1.504	1.842	.039	14	9/32	3450	2350
MER-206	30	1.1811	62	2.4409	16	.6299	1.585	2.045	.039	12	3/8	5250	3350
MER-306	30	1.1811	72	2.8346	19	.7480	1.707	2.308	.039	10	1/2	7700	4650
MER-1807	35	1.3780	47	1.8504	7	.2756	1.539	1.689	.012	26	1/8	1000	900
MER-1907	35	1.3780	55	2.1654	10	.3937	1.644	1.942	.024	18	1/4	3200	2450
MER-107	35	1.3780	62	2.4409	14	.5512	1.721	2.097	.039	15	5/16	4350	3100
MER-207	35	1.3780	72	2.8346	17	.6693	1.825	2.388	.039	10	15/32	6900	4250
MER-307	35	1.3780	80	3.1496	21	.8268	1.926	2.602	.059	10	9/16	9500	5850
MER-1808	40	1.5748	52	2.0472	7	.2756	1.735	1.886	.012	29	1/8	1050	1000
MER-1908	40	1.5748	62	2.4409	12	.4724	1.878	2.141	.024	19	1/4	3250	2700
MER-108	40	1.5748	68	2.6772	15	.5906	1.900	2.351	.039	14	3/8	5800	4100
MER-208	40	1.5748	80	3.1496	18	.7087	2.062	2.663	.039	11	1/2	8300	5450
MER-308	40	1.5748	90	3.5433	23	.9055	2.184	2.935	.059	10	5/8	11500	7300
MER-1809	45	1.7717	58	2.2835	7	.2756	1.952	2.102	.012	31	1/8	1100	1050
MER-1909	45	1.7717	68	2.6772	12	.4724	2.055	2.394	.024	19	9/32	4050	3350
MER-109	45	1.7717	75	2.9528	16	.6299	2.137	2.588	.039	15	3/8	6050	4500
MER-209	45	1.7717	85	3.3465	19	.7480	2.258	2.859	.039	13	15/32	9295	6540
MER-309	45	1.7717	100	3.9370	25	.9843	2.441	3.267	.059	11	11/16	14600	9800
MER-1810	50	1.9685	65	2.5591	7	.2756	2.169	2.357	.012	30	5/32	1585	1560
MER-1910	50	1.9685	72	2.8346	12	.4724	2.232	2.571	.024	21	9/32	4300	3750
MER-110	50	1.9685	80	3.1496	16	.6299	2.334	2.785	.039	18	3/8	6675	5450
MER-210	50	1.9685	90	3.5433	20	.7874	2.455	3.056	.039	14	1/2	9800	7250
MER-310	50	1.9685	110	4.3307	27	1.0630	2.699	3.600	.079	11	3/4	17100	11700
MER-1811	55	2.1654	72	2.8346	9	.3543	2.387	2.612	.012	29	3/16	2300	2300
MER-1911	55	2.1654	80	3.1496	13	.5118	2.469	2.845	.039	20	5/16	5050	4450
MER-111	55	2.1654	90	3.5433	18	.7087	2.592	3.116	.039	17	7/16	8700	7050
MER-211	55	2.1654	100	3.9370	21	.8268	2.713	3.389	.059	14	9/16	12100	9150
MER-311	55	2.1654	120	4.7244	29	1.1417	2.956	3.933	.079	11	13/16	19800	13800

Notes:

- Metric series angular contact ball bearings are typically manufactured from 52100 chrome steel to ABEC 3, 5 and 7 tolerances per ABMA Standard 20.
- Standard contact angles are 15° and 25°. Other options are available.
- Part numbers listed are with nonseparable, outer ring relieved configuration. Other design options are available.
- Fillet Radius (r) is the maximum shaft or housing fillet radius that bearing corners will clear.