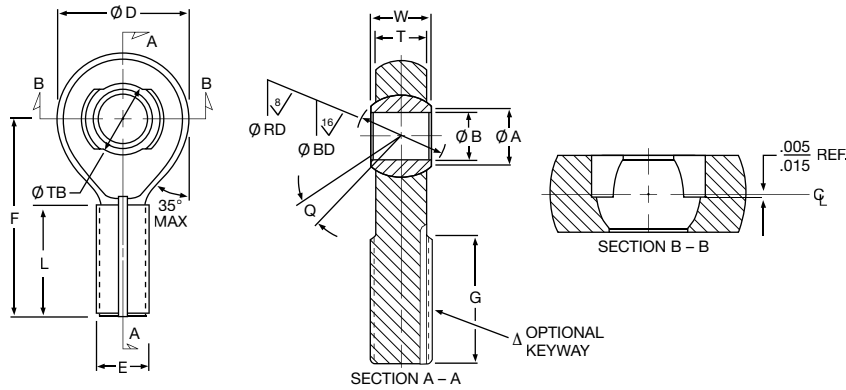


# LOADER SLOT BEARINGS

## Rod End – 2-Piece Male Thread

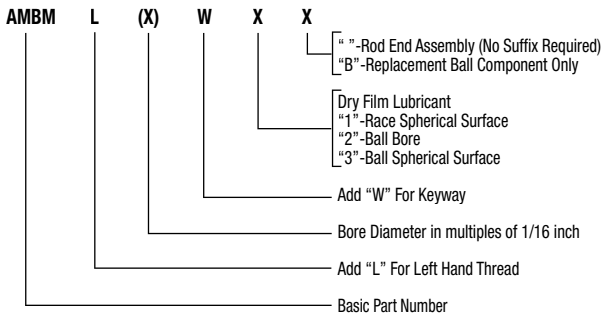


△ For keyway details, refer to engineering section, pages 68-69.

Part Number	(B) Bore Diameter	(D) Head Diameter	(W) Ball Width	(T) Body Width	(BD) Ball Spherical Diameter	(RD) Rod End Spherical Diameter	(A) Ball Flat Diameter	(Q) Mis-alignment	(TB) Thru Bore	(F) Ball C/L To End	(E) Thread Size	(L) Thread Length	(G) Keyway Flat	Limit Static Radial Load	Ultimate Static Radial Load	Weight
	Inch +.0000 -.0005	Inch +.010 -.010	Inch +.000 -.002	Inch +.010 -.010	Inch +.0000 -.0005	Inch +.0005 -.0000	Inch Ref.	Ref.	Inch +.003 -.003	Inch +.010 -.010	UNJF-3A	Inch +.031 -.031	Inch +.020 -.020	lbs.	lbs.	lbs. Ref.
AMBM3	.1900	.680	.281	.228	.4060	.4070	.293	10°	.360	1.315	1/4-28	.775	.896	2820	4950	.04
AMBM4	.2500	.827	.343	.260	.5000	.5010	.364	10°	.449	1.443	1/4-28	.775	.896	3380	7200	.05
AMBM5	.3125	.984	.375	.291	.5625	.5635	.419	10°	.503	1.948	5/16-24	1.187	1.308	5440 *	11250	.08
AMBM6	.3750	1.131	.406	.322	.6250	.6260	.475	9°	.563	2.030	3/8-24	1.187	1.308	8380 *	15750	.12
AMBM7	.4375	1.294	.437	.353	.7180	.7190	.530	8°	.651	2.250	7/16-20	1.281	1.402	11320 *	19350	.17
AMBM8	.5000	1.459	.500	.400	.8125	.8135	.600	8°	.733	2.544	1/2-20	1.468	1.589	15420 *	25200	.25
AMBM10	.6250	1.763	.625	.510	.9680	.9690	.739	8°	.857	2.832	5/8-18	1.562	1.683	24910 *	40500	.46
AMBM12	.7500	2.140	.750	.603	1.1870	1.1880	.920	8°	1.056	3.193	3/4-16	1.687	1.808	35210	58500	.77
AMBM14	.8750	2.372	.875	.713	1.3120	1.3130	.980	8°	1.138	3.677	7/8-14	2.000	2.121	40500	78300	1.14
AMBM16	1.0000	2.681	1.000	.807	1.5000	1.5010	1.118	9°	1.300	3.968	1-12	2.100	2.221	46580	101250	1.65

\*Shank limited.

### NHBB Part Numbering



### Notes:

- Nitride or Malcomize spherical body ID.
- Balls rotate freely under finger pressure @ 72°F.
- Balls are fully interchangeable. No selective assembly allowed.
- After limit load, slight crazing of the Nitride/Malcomized surface treatment may occur.

### Materials

Part No.	Ball	Body
Catalog No.	STELLITE® alloy #6, AMS 5387, Rc37 min.	17-4PH AMS 5643 or AMS 5355, Rc34-40

STELLITE® is a registered trademark of Kennametal, Inc.